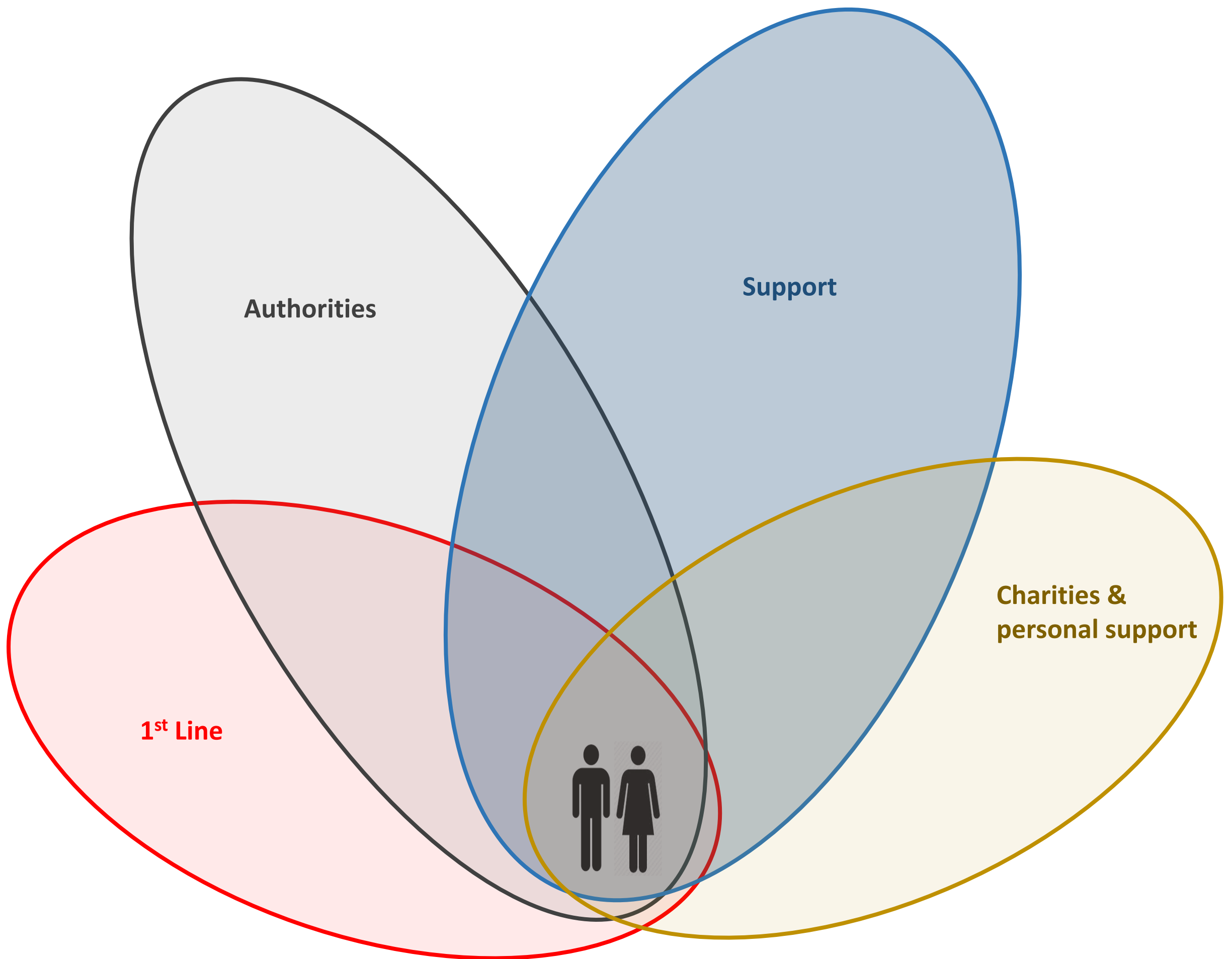
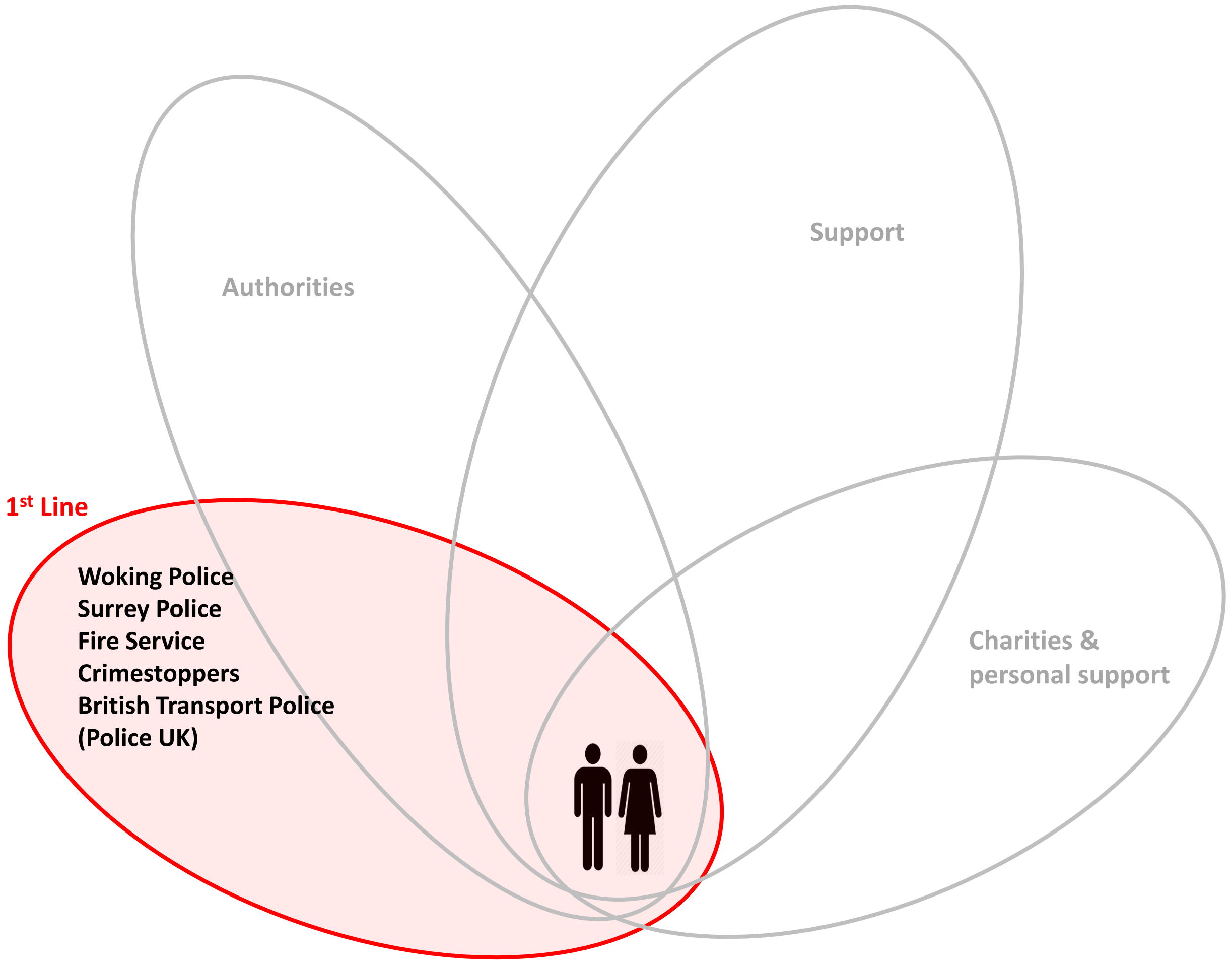


Who is out there to support us?

Presentation given at the co-ordinator's meeting on 9th Oct 2019





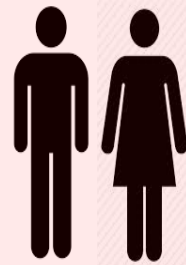
Authorities

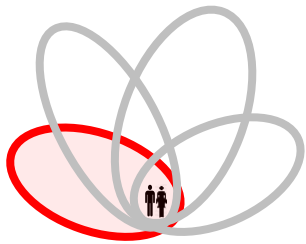
Support

1st Line

Woking Police
Surrey Police
Fire Service
Crimestoppers
British Transport Police
(Police UK)

Charities &
personal support





1st Line support

Surrey Police

Northern, Eastern and Western Divisions

Many teams are Division-based

Borough-based community teams – includes PCSOs

All 101 and 999 go to Surrey central desk – not borough

Woking Police

In Northern Division (Div HQ at Woking)

Still has a Police Station with a front desk

Community teams (and Andy Greaves) based at Woking BC

Work closely with Woking BC

Fire Service

Provide excellent preventative services (for free)

Crimestoppers

0800 555 111 – same as 999/101 but 100% guaranteed anonymous

British Transport Police

Surrey base is Guildford Police Station

999/101 as per Police

0208 209 6303

Police UK

Everything you want to know, including statistics

Why use them?

Crime (999)

Suspicion of crime (101)

In fear/danger (999)

Disturbance/ASB (999)

Reporting historic crime (101)

Reporting intelligence (101/website)

Serous road traffic accident (999)

Blockage caused by RTA (999)

<https://www.surrey.police.uk/ro/report/>

<https://crimestoppers-uk.org/give-information/forms/give-information-anonymously>

<https://www.police.uk/surrey/WKWT/>

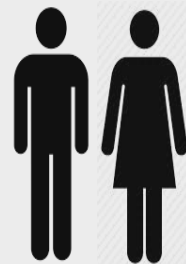
Authorities

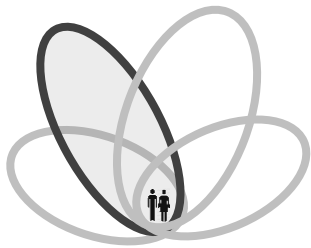
Woking BC
Surrey CC
Network Rail
New Vision Homes
PCC
Affinity Water
Trading Standards

Support

Charities &
personal support

1st Line





Authorities

Woking BC

Work closely with Neighbourhood Police team
Environmental issues
Social services
Parking/abandoned vehicles
Noisy neighbours (ASB)

New Vision Homes

Woking's housing agency
Maintenance of social housing

PCC – David Munro

Surrey County Council

Roads
Street lighting
Martyrs Lane Recycling Centre (run by SUEZ)

Joint Waste Solutions

Refuse collection

Woking, SurreyHeath, Mole Valley , Elmbridge

Affinity Water

Leaks from mains

Network Rail

Potential safety issue

Bucks & Surrey Trading Standards

Fly tipping - WokingBC

Street litter- WBC

Graffiti – WBC

Abandoned/untaxed vehicles - WBC

Dead animals – WBC

Dog issues and fouling – WBC

Refuse collection – WBC

Street lighting – SCC

Potholes - SCC

Burst main – AW

Concerns regarding Surrey Police – PCC

Suspicious/fraudulent trading - TS

<https://www.surrey.police.uk/advice/advice-and-information/asb/af/antisocial-behaviour/>

<https://www.woking.gov.uk/report-it>

<https://www.surreycc.gov.uk/do-it-online/report-it-online>

<https://www.woking.gov.uk/environmental-services>

<https://www.nvhwoking.co.uk/>

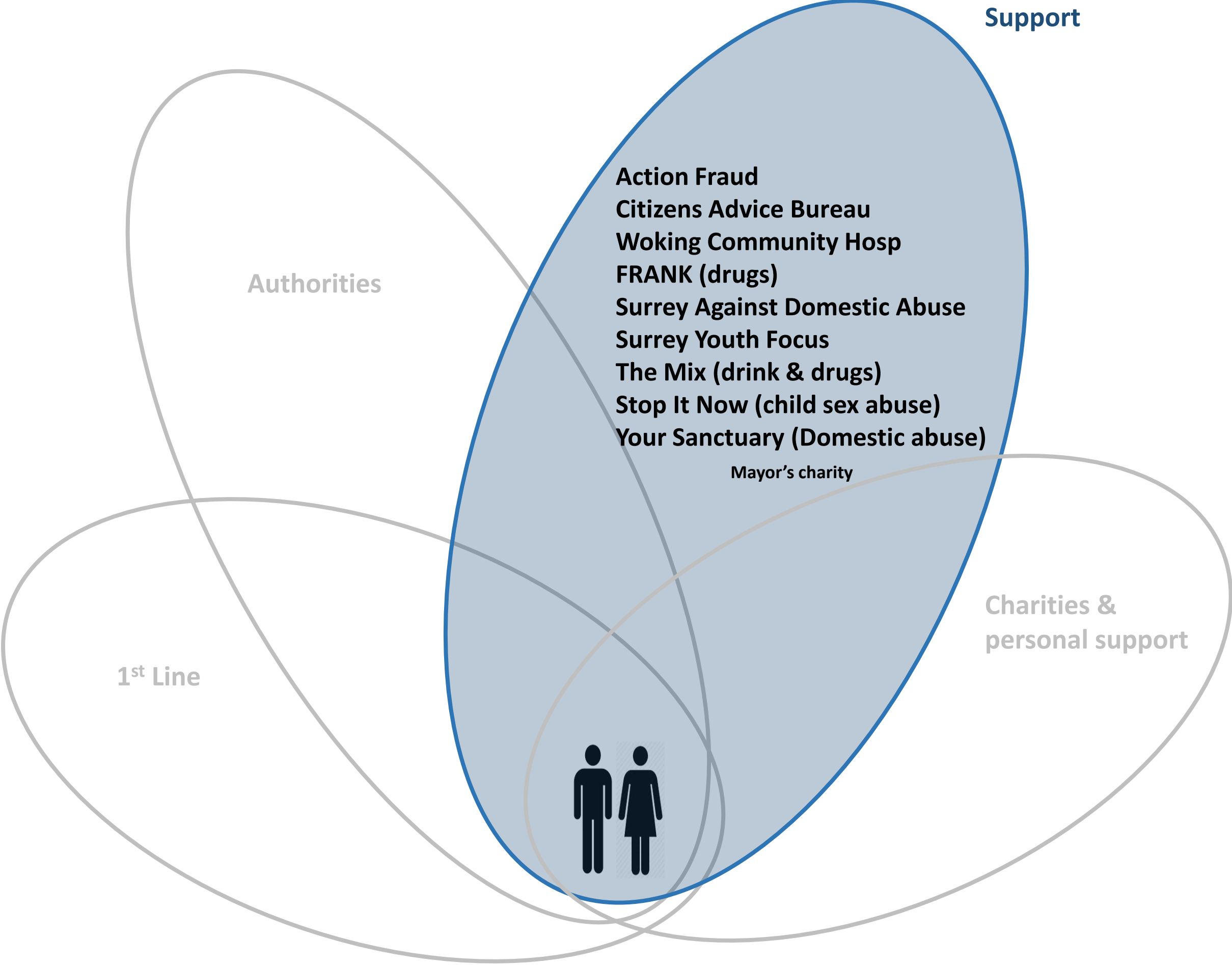
<https://www.affinitywater.co.uk/customer-alerts.aspx>

<https://www.networkrail.co.uk/communities/contact-us/>

<https://www.surrey-pcc.gov.uk/>

<https://www.surreycc.gov.uk/business-and-consumers/trading-standards>

<https://www.woking.gov.uk/parking-and-streets/street-parking-regulations/controlled-parking-zones-cpzs>



Support

- Action Fraud**
- Citizens Advice Bureau**
- Woking Community Hosp**
- FRANK (drugs)**
- Surrey Against Domestic Abuse**
- Surrey Youth Focus**
- The Mix (drink & drugs)**
- Stop It Now (child sex abuse)**
- Your Sanctuary (Domestic abuse)**

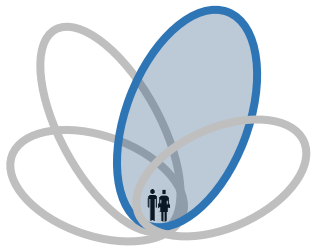
Authorities

Charities & personal support

1st Line

Mayor's charity





Support

Action Fraud

Citizens Advice Bureau

Woking Community Hosp, Bedser Hub (CSH)

FRANK (drugs)

Surrey Against Domestic Abuse

Surrey Youth Focus

The Mix (drink & drugs)

Stop It Now (child sex abuse)

Your Sanctuary (Domestic abuse)

Mayor's charity

Actual or attempted fraud (AF)

Impartial help and advice (CAB)

Support for elderly and fail (CSH)

Concerns over neighbours

Concerns over youth (as parents/grandparents)

<https://www.actionfraud.police.uk/>

<https://www.surrey.police.uk/advice/advice-and-information/wsi/watch-schemes-initiatives/os/operation-signature/>

<https://www.talktofrank.com/>

<https://www.yoursanctuary.org.uk/>

<https://www.healthysurrey.org.uk/your-health/domestic-abuse>

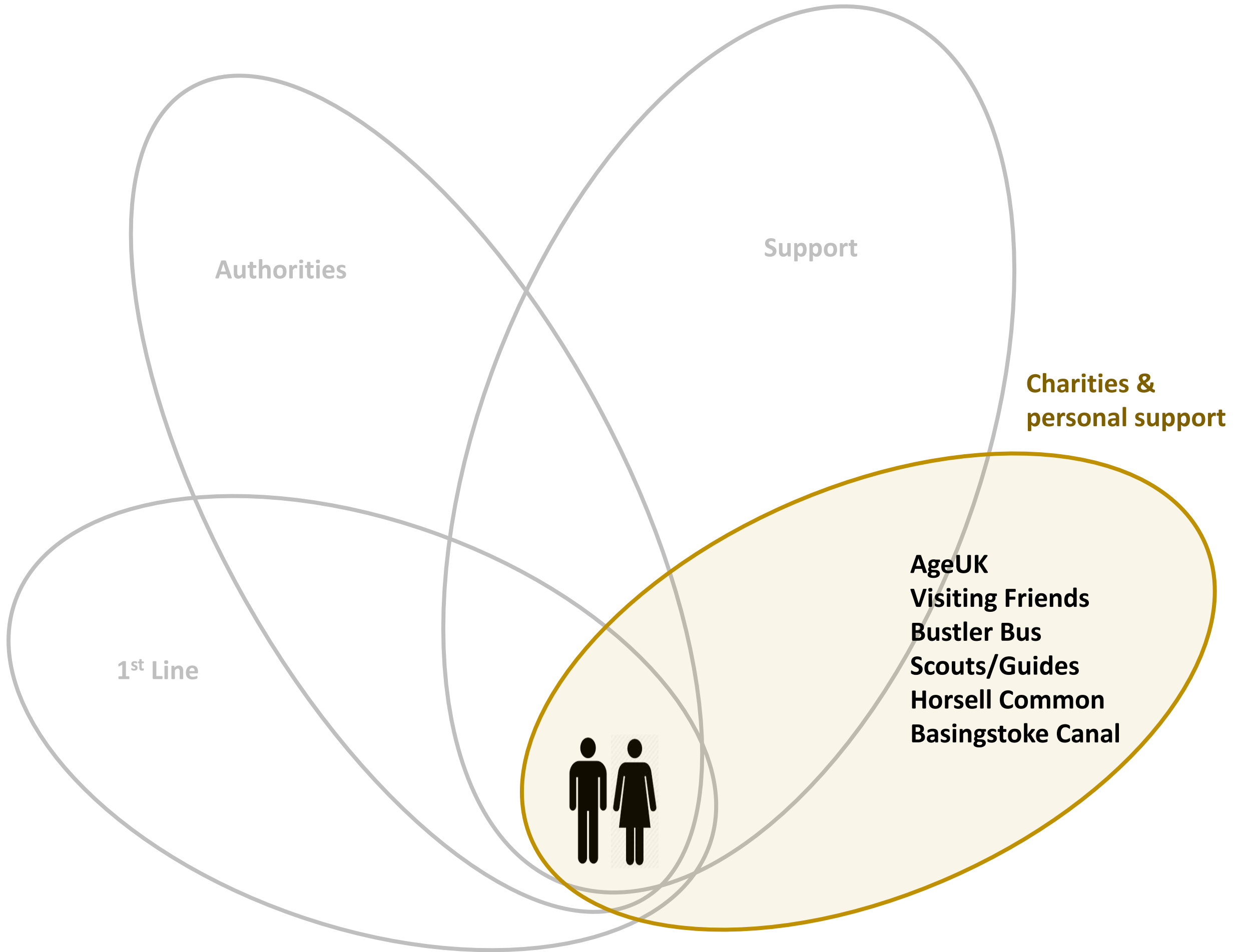
<https://www.themix.org.uk/>

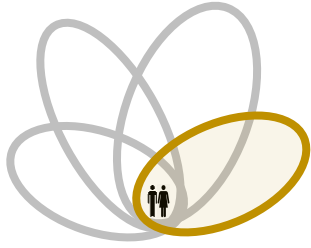
<https://www.stopitnow.org.uk/>

<https://www.wokingcab.org/>

<http://www.surreyyouthfocus.org.uk/>

<https://www.cshsurrey.co.uk/our-services/service-adults/bedser-hub>





Charities & personal support

AgeUK

Visiting Friends (Friends of the Elderly)

Bustler Bus (for those with reduced mobility or a disability)

Horsell Common Preservation Society

Basingstoke Canal Society

Scouts/Guides

Reliable home help, gardener, handyman

Visitors for lonely people

Unable to get to places

Problems with the Common or canal

Bored youth

<https://www.ageuk.org.uk/>

<https://www.surreyinformationpoint.org.uk/Services/1914>

<https://www.wokingbustler.org.uk/>

<https://www.horsellcommon.org.uk/>

<https://basingstoke-canal.org.uk/>

<https://www.wokingscouts.org.uk/>

<https://www.ggs.org.uk/> (Girl Guiding)

What is Antisocial Behaviour?

- . Rowdy, noisy behaviour in otherwise quiet neighbourhoods
- . Night time noise from houses or gardens, especially between 11.00pm and 7.00am
- . Threatening, drunken or intimidating behaviour
- . Vandalism, graffiti and fly-posting
- . Litter and fly-tipping rubbish
- . Aggressive begging
- . Drinking in the street
- . Setting off fireworks late at night
- . Abandoning cars

What is not Antisocial Behaviour?

ASB can be difficult to define, and although annoying, there are some types of behaviour that are not classed as anti-social:

- . Children playing in the street or communal areas - unless they are causing damage to property
- . Young people gathering socially - unless they are rowdy, inconsiderate and being intimidating to individuals
- . Being unable to park outside your own home
- . DIY and off road car repairs- unless these are taking place late at night or early in the morning

You should contact your local borough or district council for issues with:

- . Abandoned vehicles
- . Discarded drugs or drugs paraphernalia
- . Graffiti
- . Litter, rubbish, fly-tipping and fly-posting (unless you are witnessing fly-tipping, in which case dial 999)
- . Noise nuisance
- . Street trading
- . Street drinking/anti-social drinking (where related to premises selling alcohol)

The police deal with:

- . Anti-social use of vehicles
- . Rowdy and nuisance behaviour
- . Street drinking and anti-social drinking
- . Begging
- . Criminal damage/vandalism
- . Drug dealing
- . Misuse of air guns and inappropriate use of fireworks

Surrey County Council handles issues with:

- . Hedges and highways

Contact the social housing provider for:

- . Noisy tenants
- . Tenants committing antisocial behaviour

Photos of posters from Woking BC

General construction work **should** be restricted to the following hours: Monday to Friday 8am to 6pm. Saturdays 8am to 1pm. **Noisy** work is prohibited on Sundays and bank holidays.